

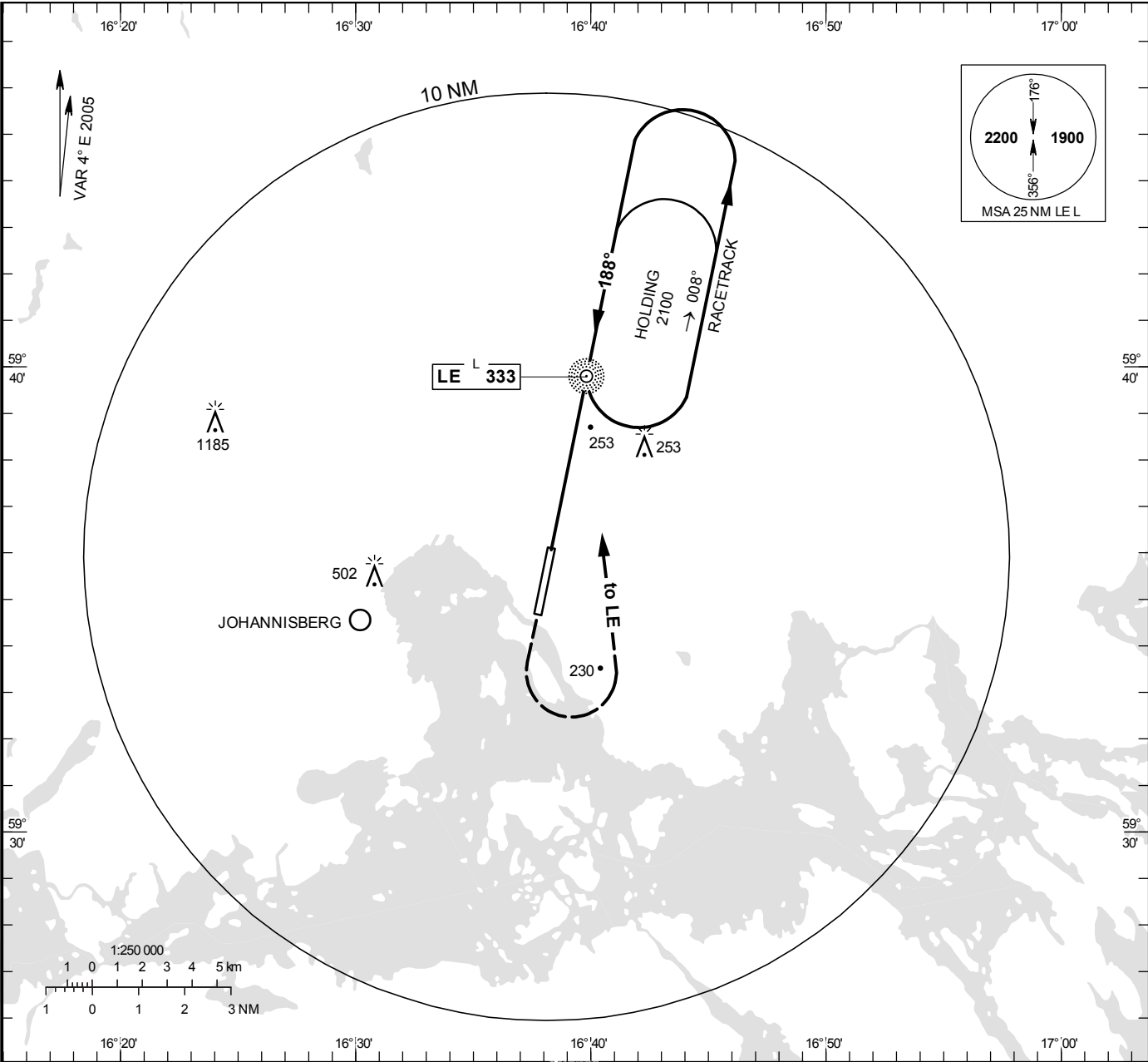
STOCKHOLM/Västerås

NDB 19

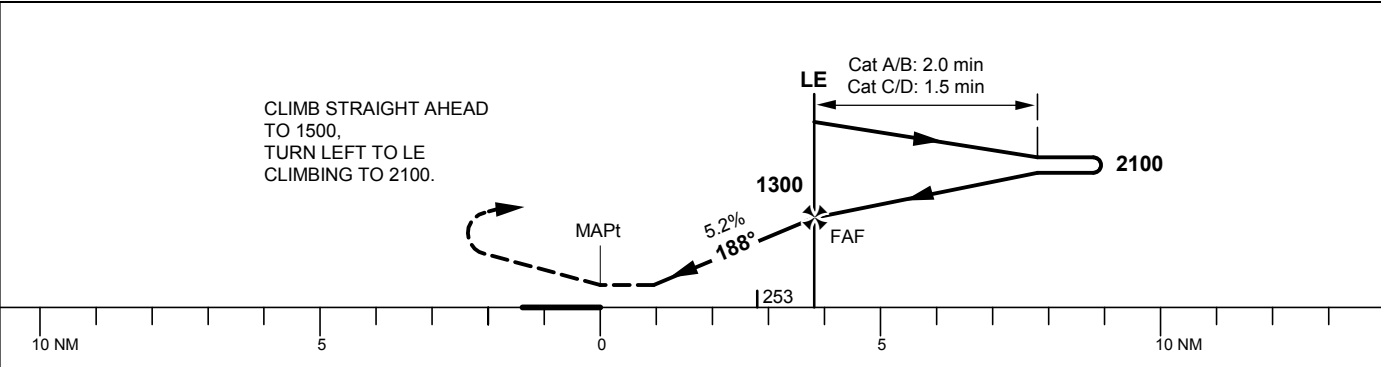
| | |
|----------------|---------|
| VÄSTERÅS TOWER | 130.605 |
| VÄSTERÅS ATIS | 127.555 |

THR ELEV 21.7 ft, AD ELEV 21 ft
OCH are related to THR.
Circling OCH are related to AD ELEV.
BRG are MAG
ALT, HGT and ELEV in ft.

INSTRUMENT
APPROACH
CHART – ICAO



TA 5000 ft AMSL Max speed within Racetrack IAS 210 kt



| OCA (H) | | | | | Final approach | Distance FAF-MAPt 3.8 NM | | | | | | | |
|----------------------|-----------|-----------|-----------|-----------|-----------------|--------------------------|------|------|------|------|------|------|--|
| Cat of ACFT | A | B | C | D | GS | kt | 80 | 100 | 120 | 140 | 160 | 180 | |
| Straight-in Approach | 500 (480) | | | | Time | min:s | 2:51 | 2:16 | 1:54 | 1:37 | 1:25 | 1:16 | |
| Circling | 530 (510) | 550 (530) | 900 (880) | 900 (880) | Rate of descent | ft/min | 425 | 530 | 635 | 740 | 845 | 950 | |